

Catálogo de Distribución





RR CAMBRIDGE

TL TV TY CF
HH1F HH2F HH3F HH4F HH5F HH6F

- ID: DE000357545439
- NAAB: **198H002039**
- aAa: **342516**
- COMMANDER x MAXIM x SHOTTLE
- 1st Dam: RR ELUISA 955 - **VG 89**
- 2nd Dam: RR ELISA 44 - **EX 90**



ONE OF THE BEST DAUGHTER PROVEN BULL FOR MORPHOLOGY AND UDDERS BY FAR

Production and type, excellent udders, great milkability and udder health.

USE ON: Prince, Milito, Savoia, Duko, Ventus, Galactico, Glorioso, Duomila, Brasileiro. Poison, Supershot, Supersire, Josuper, Mincio, Epic, Doorman, Twist, Surefire, Tabasco.

Last update: 2023 April



ARCA Representaciones S.A.

Libertad Duarte

Asesora de ventas

(502) 3075 7278, (502) 3088 8533

ventas@arcarepresentaciones.com.gt



ZFZ CRISALIS

TL TV TY RF CF TM
HH1F HH2F HH3F HH4F HH5F HH6F

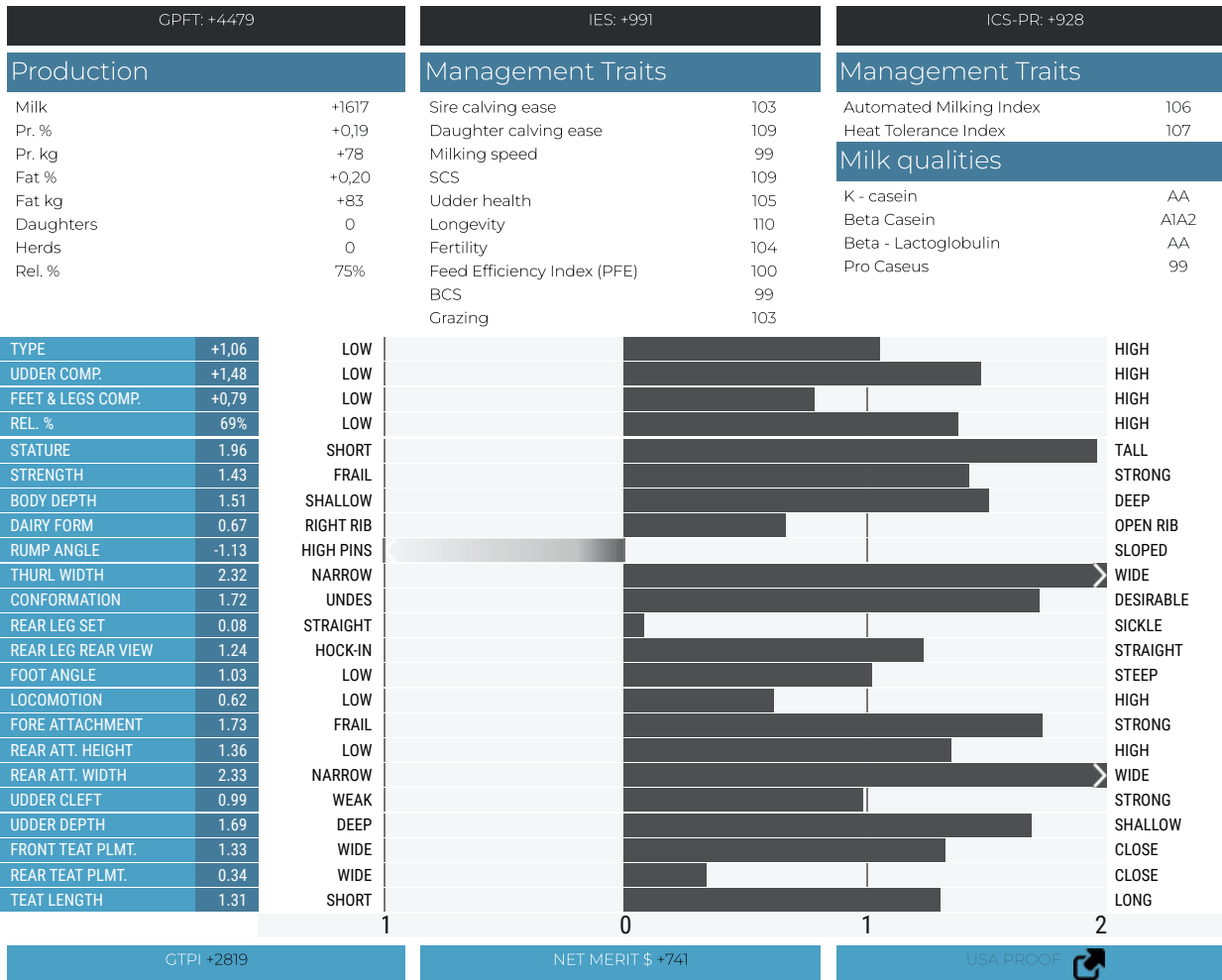
- ID: DE000540974596
- NAAB: **198HO02222**
- aAa: **234165**
- GYWER x MR SALVATORE x POWERBALL P
- 1st Dam: ZFZ CRYSTAL 60 - **VG 87**
- 2nd Dam: MOX CRYSTAL - - **EX 90**



He tops on many international rankings. High production, ideal teat length and position.

USE ON: Redalert, Redbird, Cruyff, Redliquid, Camirap, Redfox, Rager Red, Paralel, Brasileiro, Clash, Poison, Duomilia, Nebula, Miura, Vanhalen, Sound System, Jedi, Montross, Duke, Padawan, Recoil

Last update: 2023 April



ARCA Representaciones S.A.

Libertad Duarte

Asesora de ventas

(502) 3075 7278, (502) 3088 8533

ventas@arcarepresentaciones.com.gt



RR DUBLINER



TL TV TY TM
HH1F HH2F HH3F HH4F HH5F HH6F

- ID: DE000362351602
- NAAB: **198HO02219**
- aAa: **342516**
- DURABLE x GYMNAST x BOSS
- 1st Dam: RR ELANIE - **VG 87**
- 2nd Dam: RR ELISA-MARIE - - **VG 86**



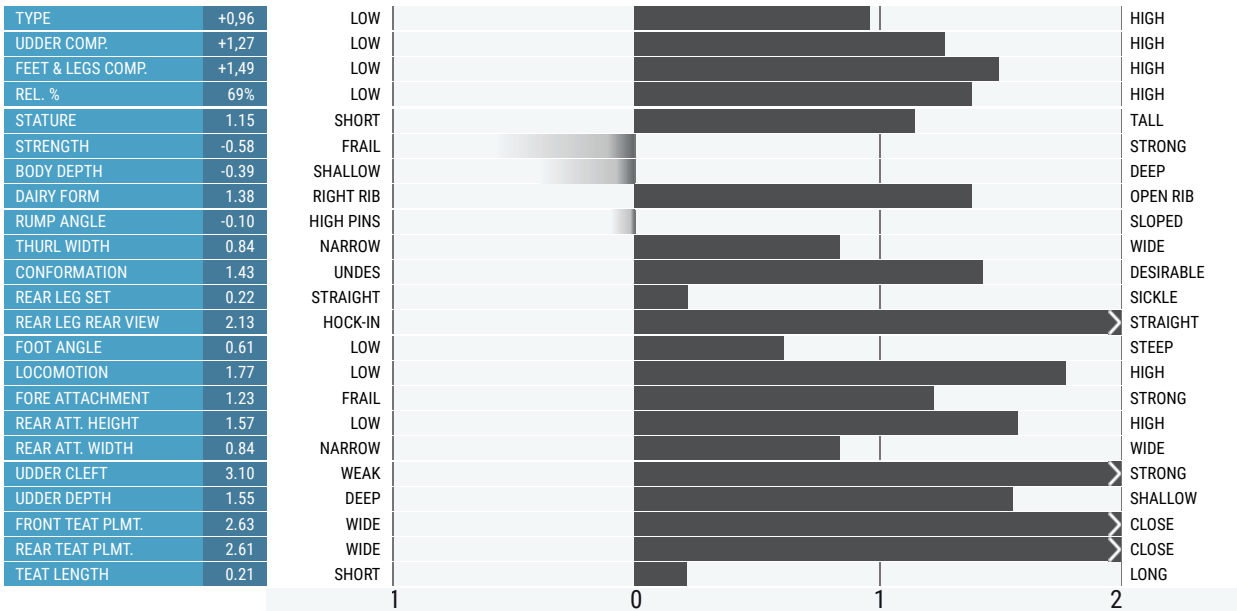
NO ORDINARY BULL: ONE OF THE BEST PRO CASEUS BULLS.

From the Family of Cambridge and the bonus of a different pedigree. Great udder and excellent feet & legs.

USE ON: Comedy, Brasileiro, Paralel, Comedy, Gordon, Pegasus, Bluebill, Glorioso, Sharpe, Enterprise, Hotrod, Tabasco, Fortune, Frazzled, Jedi, Duke, Padawan.

Last update: 2023 April

GPFT: +4330		IES: +994		ICS-PR: +1069	
Production		Management Traits		Management Traits	
Milk	+1352	Sire calving ease	100	Automated Milking Index	99
Pr. %	+0,20	Daughter calving ease	113	Heat Tolerance Index	108
Pr. kg	+68	Milking speed	105	Milk qualities	
Fat %	+0,13	SCS	107	K - casein	BB
Fat kg	+62	Udder health	104	Beta Casein	A1A2
Daughters	0	Longevity	112	Beta - Lactoglobulin	AB
Herds	0	Fertility	106	Pro Caseus	108
Rel. %	75%	Feed Efficiency Index (PFE)	100		
		BCS	94		
		Grazing	101		



CTPI +2771

NET MERIT \$ +782

USA PROOF



ARCA Representaciones S.A.

Libertad Duarte

Asesora de ventas

(502) 3075 7278, (502) 3088 8533

ventas@arcarepresentaciones.com.gt



GO-FARM MIURA



ET TL TV TY CF
HH1F HH2F HH3F HH4F HH5F HH6F

- ID: IT019991486573
- NAAB: **198HO02100**
- aAa: **342516**
- AFTERBURNER x ENFORCER x BOOKEM
- 1st Dam: GO-FARM MAMBA ET - **VG 85**
- 2nd Dam: HONDA - - **VG 86**

A2A2

SEXED SEMEN

GRAZING

CALVING EASE

HH FREE

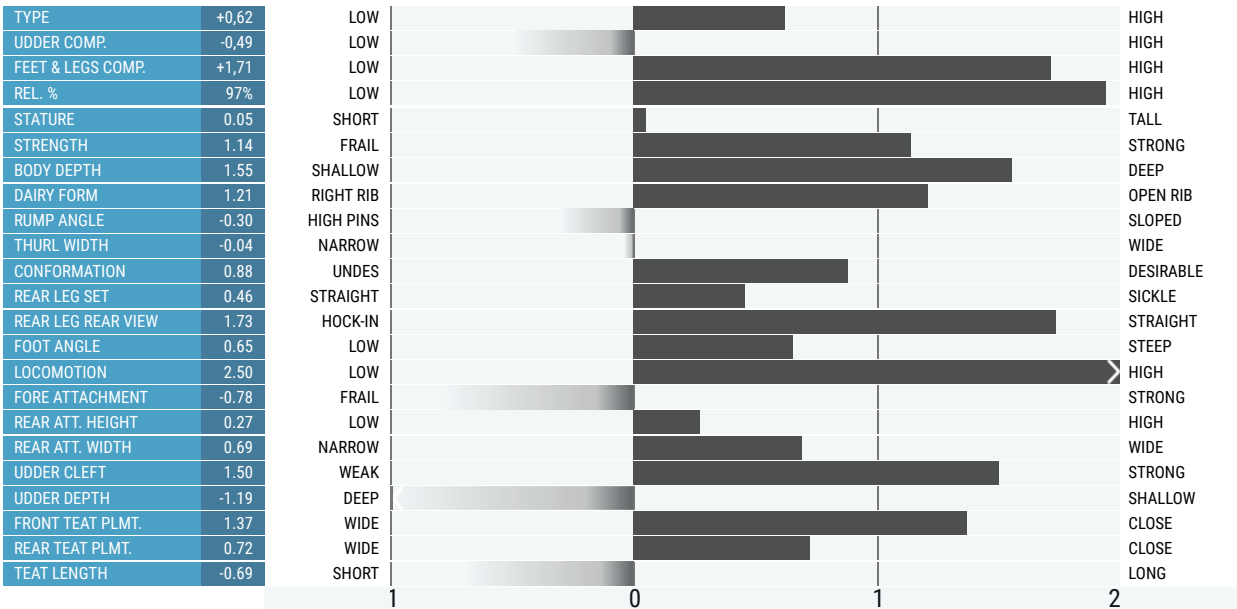
INCOME

From the Family of Duomilia. He is in the Top5 for PFT and in 2nd place for IES and ICS-PR Italian Proven bulls ranking! The daughters of Miura have great maturity rate and high fertility index (107).

USE ON: Brasileiro, Comedy, Paralel, Clash, Pegasus, Jesolo, Dragon, Swami, Sound System, Rodanas, Sharpe, Neutron, Vanhalen, Dateline, Hothand, Hotline, Jedi, Duke, Frazzled.

Last update: 2023 April

GPFT: +4226		IES: +956		ICS-PR: +903	
Production		Management Traits		Management Traits	
Milk	+676	Sire calving ease	102	Automated Milking Index	105
Pr. %	+0,39	Daughter calving ease	113	Heat Tolerance Index	106
Pr. kg	+67	Milking speed	101	Milk qualities	
Fat %	+0,38	SCS	105	K - casein	AB
Fat kg	+70	Udder health	103	Beta Casein	A2A2
Daughters	1011	Longevity	105	Beta - Lactoglobulin	AB
Herds	309	Fertility	108	Pro Caseus	95
Rel. %	98%	Feed Efficiency Index (PFE)	102		
		BCS	101		
		Grazing	113		



CTPI +2554

NET MERIT \$ +627

USA PROOF



ARCA Representaciones S.A. Libertad Duarte

Asesora de ventas
(502) 3075 7278, (502) 3088 8533
ventas@arcarepresentaciones.com.gt



LEONARDO

- Matr.: IT059990318635
- Ombra 'E Nisciuno x Goku da Izano x N.D.
- Madre: 542
- Nonna: 803

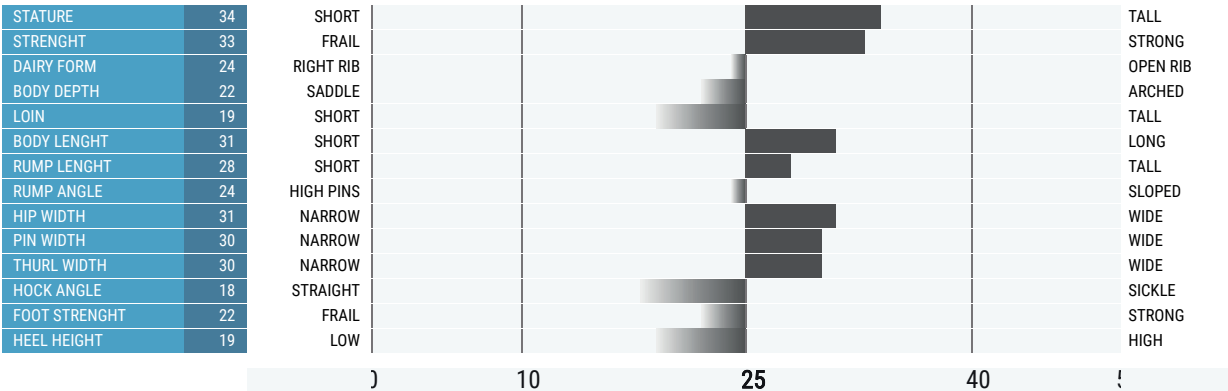
Leonardo is absolutely a water buffalo bull specialized on high milk production. He has an extreme milk index. His mother made a record lactation of over 5000 kgs with 7,50% fat and 4,40% protein.

Last update: 2022 November

Production		Milk qualities		Individual type traits	
IBMI	104	PR. %	-0.12	FINAL SCORE	80
IBMI REL., %	65	PR KG	24	BODY TYPE	Good Plus
MILK KG	583	FAT %	-0.44	BODY COMPOSITIVE	82
MILK REL., %	66	FAT KG	33	FEET & LEGS	79
DAUGHTERS	2			PRODUCTIVE POTENTIAL	80
LACT. NUMBER	2				
HERDS	1				
YIELD INDEX	-9.7				

Conformation

FEET & LEGS COMP.	-0.91
FEET & LEGS REL., %	61
UDDER COMP.	0.84
UDDER COMP. REL., %	67



DAM LACTATIONS

LACT. NUMBER	AGE	DAYS	MILK KG	FAT %	FAT KG	PR. %	PR. KG
1	02/02	270	3417	7.6	260	4.6	158
2	03/06	270	3527	7.7	274	4.7	168
3	05/00	267	3553	0	341	5	178
4	06/01	270	5052	8.2	380	4.4	227
5	07/07	270	3723	7.2	308	4.8	179
6	08/09	194	3093	7.8	223	4.4	137
7	10/02	270	3273	6.9	257	4.7	156
8	11/03	270	4585	6.9	319	4.6	215
9	12/02	29	563	0	39	4.4	25
LIFETIME PRODUCTION	DAYS	MILK KG	FAT %	FAT KG	PR. %	PR. KG	
9	2110	30786	5.81	2401	4.62	1443	

SECOND DAM LACTATION

BEST LACTATION	AGE	DAYS	MILK KG	FAT %	FAT KG	PR. %	PR. KG
3	05/08	270	4469	8.40	377	4.60	204
LIFETIME PRODUCTION	DAYS	MILK KG	FAT %	FAT KG	PR. %	PR. KG	
	2118	27797	8.4	2343	4.5	1276	



ARCA Representaciones S.A.
Libertad Duarte

Asesora de ventas
 (502) 3075 7278, (502) 3088 8533
 ventas@arcarepresentaciones.com.gt



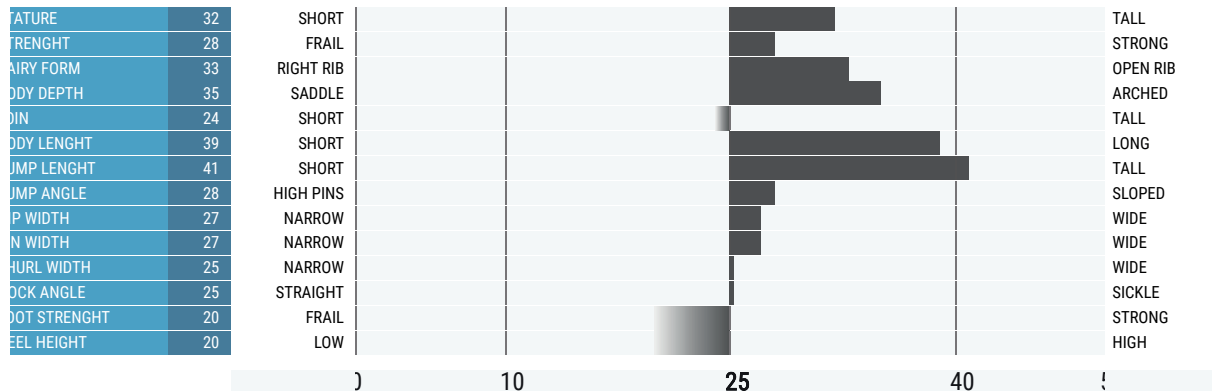
CARAVAGGIO

- Matr.: IT059990291848
- Ombra 'E Nisciuno x IT059990019022 x LT0000000004058
- Madre: 330
- Nonna: 819

Caravaggio comes from one of the most productive Water Buffalo females in Italy. In fact, the mother of Caravaggio made two lactations record over 4300 kgs. She has a very good final score of 85 points, with 87 points for productive potential.

last update: 2022 November

Production		Milk qualities		Individual type traits	
BMI	112	PR. %	-0.04	FINAL SCORE	83
BMI REL., %	73	PR KG	11	BODY TYPE	Good Plus
MILK KG	263	FAT %	-0.13	BODY COMPOSITIVE	86
MILK REL., %	74	FAT KG	19	FEET & LEGS	80
DAUGHTERS	6	Conformation FEET & LEGS COMP. -0.97 FEET & LEGS REL. % 62 UDDER COMP. 2.76 UDDER COMP. REL. % 68		PRODUCTIVE POTENTIAL	85
ACT. NUMBER	6				
HERDS	1				
FIELD INDEX	-4.99				



DAM LACTATIONS

LACT. NUMBER	AGE	DAYS	MILK KG	FAT %	FAT KG	PR. %	PR. KG	
1	03/03	270	2799	7.5	210	4.7	134	
2	04/03	270	3837	7.7	298	4.6	177	
3	05/07	270	4303	8.1	349	5	215	
4	06/08	270	2767	7.8	217	4.7	132	
5	08/00	270	4378	7.7	338	4.8	109	
6	09/01	133	2202	9.2	203	4.9	153	
7	10/03	270	3220	8	259	4.7		
LIFETIME PRODUCTION		DAYS	MILK KG	FAT %	FAT KG	PR. %	PR. KG	
		7	1753	23506	8	1874	4.77	920

SECOND DAM LACTATION

BEST LACTATION	AGE	DAYS	MILK KG	FAT %	FAT KG	PR. %	PR. KG
2	05/00	270	3694	9.40	346	4.60	169
LIFETIME PRODUCTION		DAYS	MILK KG	FAT %	FAT KG	PR. %	PR. KG
		2160	24073	8.3	2017	4.6	1116



ARCA Representaciones S.A.

Libertad Duarte

Asesora de ventas

(502) 3075 7278, (502) 3088 8533

ventas@arcarepresentaciones.com.gt



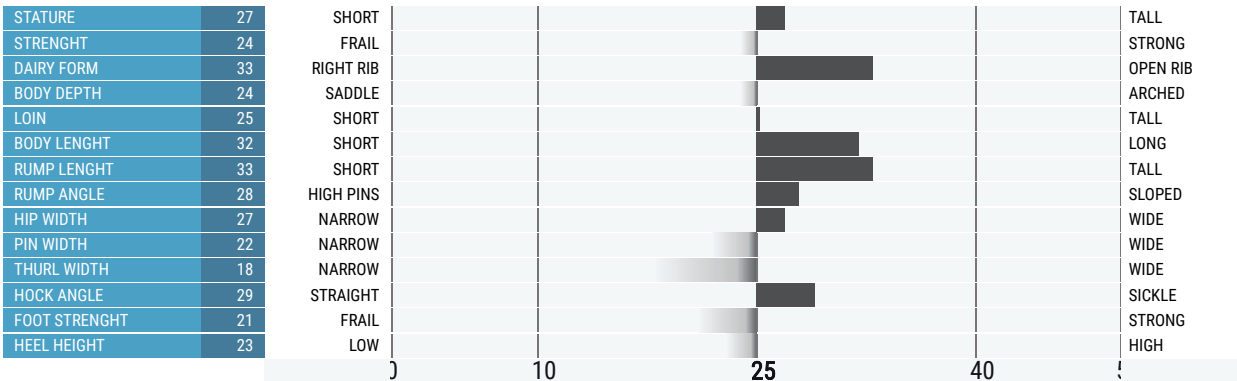
ORAZIO

- Matr.: IT059990262824
- IT059990158995 x LT000000010377 x LT0000000008019
- Madre: 1169
- Nonna: 345

Orazio comes from one of the most influential families from the Circe herd, he is the half-brother of MASTRO TITTA, a very positive proven bull. Orazio is very complete, for production, milk quality and balanced morphology.

Last update: 2023 June

Production		Milk qualities		Individual type traits	
IBMI	120	PR. %	-0.04%	FINAL SCORE	82
IBMI REL., %	91%	PR KG	12	BODY TYPE	Good Plus
MILK KG	266	FAT %	-0.2%	BODY COMPOSITIVE	84
MILK REL., %	91%	FAT KG	20	FEET & LEGS	78
DAUGHTERS	43	Conformation		PRODUCTIVE POTENTIAL	84
LACT. NUMBER	59	FEET & LEGS COMP.	1.45		
HERDS	8	FEET & LEGS REL., %	73%		
YIELD INDEX	-3.37	UDDER COMP.	2.03		
		UDDER COMP. REL., %	82%		



DAM LACTATIONS

LACT. NUMBER	AGE	DAYS	MILK KG	FAT %	FAT KG	PR. %	PR. KG
1	02/10	270	3866	8.9	345	4.6	177
2	04/00	270	3742	7.9	295	4.7	176
3	05/02	229	3713	7	261	4.3	163
4	06/02	270	3847	7.7	297	4.5	176
5	07/04	270	4117	8.3	343	4.4	183
6	08/05	270	3997	8.4	338	4.7	191
7	09/06	270	3970	7.1	282	4.6	185
8	10/11	270	3393	7.6	259	4.6	157
9	16/01	270	3432	7	242	4.4	151
LIFETIME PRODUCTION		DAYS	MILK KG	FAT %	FAT KG	PR. %	PR. KG
9		2389	34077	7.77	2662	4.53	1559

SECOND DAM LACTATION

BEST LACTATION	AGE	DAYS	MILK KG	FAT %	FAT KG	PR. %	PR. KG
5	08/00	270	3101	8.90	276	4.60	144
LIFETIME PRODUCTION		DAYS	MILK KG	FAT %	FAT KG	PR. %	PR. KG
		1639	15732	7.7	1225	4.5	721



ARCA Representaciones S.A.

Libertad Duarte

Asesora de ventas

(502) 3075 7278, (502) 3088 8533

ventas@arcarepresentaciones.com.gt



William

BLACK ANGUS

IT026990485818 - BIFARM WILLIAM - NATO 08/03/2020

PRINCE ZORRO S041
(DARRAGH x PATRIOT)

LACCABEE KEIRA
(**SANDYLANE GORDAN**)

LACCABEE CATHERINE
(**DRUMDEEVIN DANCER**)



SANDYLANE TADGH - stessa famiglia di WILLIAM

WILLIAM È NATO PRESSO L'ALLEVAMENTO BIFARM DI QUARTO D'ALTINO (VE) ED HA UN PEDIGREE ABERDEEN ANGUS PURO AL 100%.

WILLIAM DARA' OTTIMO SVILUPPO MUSCOLARE DEI VITELLI, CON OTTIMA MARZZATURA E TENEREZZA DELLA CARNE.



ARCA Representaciones S.A.

Libertad Duarte

Asesora de ventas

(502) 3075 7278, (502) 3088 8533

ventas@arcarepresentaciones.com.gt



Valutazione genetica

Matricola	Nome	Collare	Data nascita
01IT048990054885	MIR VOLVO HURA VORTEX		11/07/2015

Allevatore	4210127	RICCIANICO di MARCHI REMO & BRUN - RICCIANICO - FIRENZUOLA (FI)
Consorzio	9900004	POLAR C/O ANARB - LOC. FERLINA, 204 - BUSSOLENGO (VR)

1ª GENERAZIONE

PADRE:
01IT024990360669
VOLVO-CH

2ª GENERAZIONE

NONNO PATERNO:
01DE000813034326
PAYSSLI

NONNA PATERNA:
01IT024990239517
CA MASCARI AGIO LIETA ET

3ª GENERAZIONE

01US000000193627
PAYOFF
01DE000812171314
BOUNTY

01CH120000771198
AGIO
01IT024000274281
CA MASCARI JACKP LAURA

01DE000808024689
HUSSLI
01DE000930481301
LAURA

01IT072000473848
GRIP

01IT048990013308
MIR GOLIATH-DAMERINA



SOGGETTO:
01IT048990054885
MIR VOLVO HURA
VORTEX

MADRE:
01IT048990038274
MIR HURAY INCA

NONNO MATERNO:
01DE000935830301
HURAY

NONNA MATERNA:
01IT048990027988
MIR GRIP-FIRSTSEX

Data calcolo ufficiale:	06/12/2022
Data 1ª val. genomica:	15/10/2015
Data 1ª prova con figlie:	06/04/2021

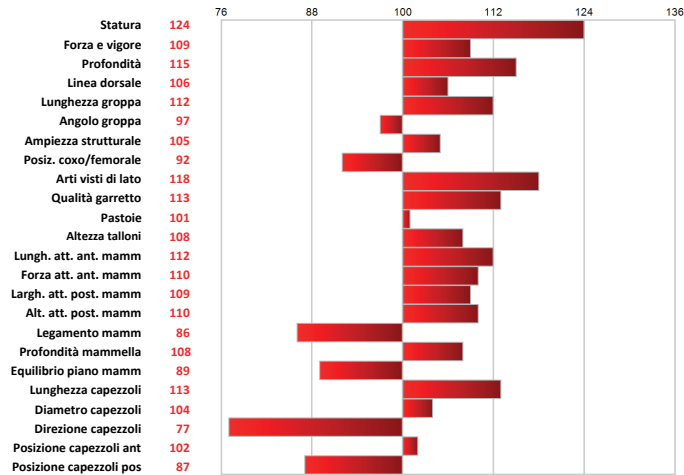
I.T.E.	779
TIPO INDICE	GEBV
RANK	95

INDICI PRODUTTIVI	
LATTE KG	1410
GRASSO KG	59
GRASSO %	0,14
PROTEINE KG	45
PROTEINE %	0,02
N° FIGLIE TOTALI	41
N° FIGLIE ITALIANE	41

INDICI FUNZIONALI	
LONGEVITA' FUNZIONALE	104
VELOCITA' DI MUNGITURA	86
BCS	77
CELLULE SOMATICHE	123
INTERPARTO	113
FUNZIONALITA' & FITNESS	121
DISOLABRUNA	117

INDICI MORFOLOGICI

PUNTEGGIO	109
CAP. PROD.	119
GROPPA	105
ARTI E PIEDI	108
MAMMELLA	108
N° FIGLIE MORFOLOGIA	27



K-Caseina	B-Lattoglobulina	B-Caseina	Weaver	SMA	Aracnomelia	SDM	BH2
BB	BB	A1A2	Non port./Dna	Non port./Dna	Non port./Dna	Non port./Dna	Non port./Dna



BIODIVERSITA'

DICATORE DI FUORILINEA

Famiglie MENO parenti %

Famiglie PIU' parenti %

94



-0.03	DALLY	1.98	SALOMON	19.14	HURAY	10.32	HERBY
0.06	POSTER	2.00	FANATIK	15.88	VELTLIN	10.16	HERCULES
0.55	AMAZON	2.14	GENOX-BOY	15.85	PAYSSLI	9.94	JERONIMO-CH
0.83	ZEPHIR	2.17	PHIL	12.60	HARVEST	9.94	HARRISON
1.06	GLARUS	2.25	BEAN	12.18	FRY	9.91	HARLEY-DE
1.36	VIP-DE	2.27	HURVINEK	11.81	FALK	9.74	NARCOTIC
1.47	SIMBABOY	2.28	HAVANA	10.79	HASLAM	9.69	HADRIAN
1.58	VIGOR	2.30	ANIBAL	10.55	DOMINIK	9.64	PASSAT-CH
1.64	HOT	2.35	VINTAGE	10.53	BRADLEY	9.52	HOTEL
1.70	BOEING	2.46	BOMBA	10.44	HUNTER	9.39	PAYPAL

ECO

EFFICIENZA ALIMENTARE

127,00



METANO X KG FORMAGGIO

122,00



FORMAGGIO PRODOTTO

141,00



HAPPY

FUNZIONALITA' & FITNESS

121



LONGEVITA' FUNZIONALE

104



CELLULE SOMATICHE

123



VELOCITA' MUNGITURA

86



INTERPARTO

113



BCS

77





Associazione Nazionale Allevatori Bovini della Razza Bruna Italiana



Valutazione genetica

Matricola	Nome	Collare	Data nascita
01IT014990117568	ZARI MOIA ZARDO ET		01/03/2015

Allevatore	1524379	MARANTELLI COLOMBIN FRANCO AZ. A - VIA NAZIONALE 36 - VILLA DI TIRANO (SO)
Consorzio	9900004	POLAR C/O ANARB - LOC. FERLINA, 204 - BUSSOLENGO (VR)

1ª GENERAZIONE

PADRE:
01DE000942950041
ZARISTO

2ª GENERAZIONE

NONNO PATERNO:
01IT021000782330
ZASTER

NONNA PATERNA:
01DE000938206537
FAITH

3ª GENERAZIONE

01ITV1000121852
ZOLDO
01DE000912436709
HELJETA

01US000000191184
PRONTO
01DE000912436706
FIESTA

01ITV1000116924
GORDON
01ITBZ000250636
ZANNA

01US000000191953
DALLAS TWIN
01IT017500309888
MACARIO OKLAOMA



Luca Nalli

SOGGETTO:
01IT014990117568
ZARI MOIA ZARDO ET

MADRE:
01IT017990591481
MOIADO ULA

NONNO MATERNO:
01ITBZ000582001
MOIADO

NONNA MATERNA:
01IT017990334830
DALLAS SARA

Data calcolo ufficiale: 06/12/2022

Data 1ª val. genomica: 15/05/2015

Data 1ª prova con figlie: 11/08/2020

I.T.E.	727
TIPO INDICE	GEBV
RANK	94

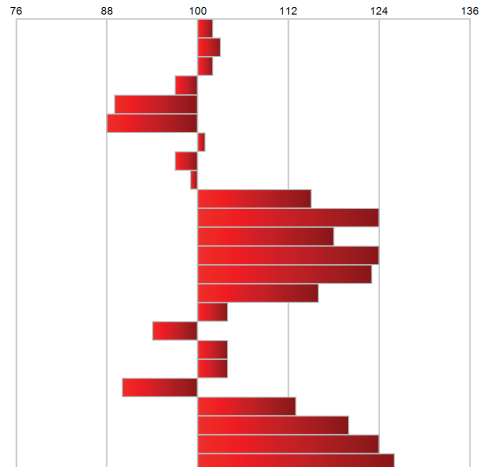
INDICI PRODUTTIVI	
LATTE KG	1121
GRASSO KG	30
GRASSO %	-0,14
PROTEINE KG	32
PROTEINE %	-0,03
N° FIGLIE TOTALI	114
N° FIGLIE ITALIANE	114

INDICI FUNZIONALI	
LONGEVITA' FUNZIONALE	101
VELOCITA' DI MUNGITURA	120
BCS	86
CELLULE SOMATICHE	114
INTERPARTO	102
FUNZIONALITA' & FITNESS	121
DISOLABRUNA	112

INDICI MORFOLOGICI

PUNTEGGIO	110
CAP. PROD.	108
GROPPA	99
ARTI E PIEDI	122
MAMMELLA	112
N° FIGLIE MORFOLOGIA	89

Statura	102
Forza e vigore	103
Profondità	102
Linea dorsale	97
Lunghezza groppa	89
Angolo groppa	88
Ampiezza strutturale	101
Posiz. coxo/femorale	97
Arti visti di lato	99
Qualità garretto	115
Pastoie	124
Altezza talloni	118
Lungh. att. ant. mamm	124
Forza att. ant. mamm	123
Largh. att. post. mamm	116
Alt. att. post. mamm	104
Legamento mamm	94
Profondità mammella	104
Equilibrio piano mamm	104
Lunghezza capezzoli	90
Diametro capezzoli	113
Direzione capezzoli	120
Posizione capezzoli ant	124
Posizione capezzoli pos	126



K-Caseina	B-Lattoglobulina	B-Caseina	Weaver	SMA	Aracnomelia	SDM	BH2
BB	AA	AZA2	Non port./Dna	Non port./Dna	Non port./Dna	Non port./Dna	Non port./Dna



ARCA Representaciones S.A.

Libertad Duarte

Asesora de ventas

(502) 3075 7278, (502) 3088 8533

ventas@arcarepresentaciones.com.gt

BIODIVERSITA'

DICATORE DI FUORILINEA

Famiglie MENO parenti %

Famiglie PIU' parenti %

96



0.69	VADIAN	2.14	PELMO	25.11	ZARISTO	7.91	VIVID
1.54	HARLEY-DE	2.15	FRY	14.25	ZASTER	7.64	SYLAR
1.79	BROOKINGS	2.29	HERCULES	13.71	ZAR	7.53	SOLEIN
1.80	JONGLEUR	2.41	HARDWELL	11.42	MIKE	7.48	GLARUS
1.85	ANTONOV	2.45	HAEGAR	10.96	NEOTERIO	7.35	GUSTI
1.86	ANIBAL	2.59	HOLDRIO	9.57	GORAN	7.31	SESVENNA
1.93	VIGOR	2.60	BALU	8.87	NIRVANA	7.27	TEVEZ
1.95	SLIKER	2.69	ASSAY	8.46	FANTASTIC	7.07	JONIO
2.10	NORIUS	2.71	FARGO	8.18	PAYMAN	7.05	CADONE
2.13	BARCA	2.72	VIPLY	8.13	PAYPAL	7.04	BAYS

ECO

EFFICIENZA ALIMENTARE

119,00



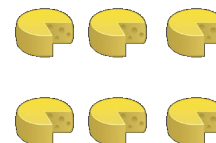
METANO X KG FORMAGGIO

116,00



FORMAGGIO PRODOTTO

125,00



HAPPY

FUNZIONALITA' & FITNESS

121



LONGEVITA' FUNZIONALE

101



CELLULE SOMATICHE

114



VELOCITA' MUNGITURA

120



INTERPARTO

102



BCS

86

